



# PINNACLE INDUSTRIES

*(Manufacturer & Exporter of Casting and Machined Components)*

**An ISO 9001:2015 TUV NORD Certified Company**

*Your one-stop Source!*

For your production line needs

Prototype - Casting - CNC Machining - Assembly - Contract Manufacturing



# ABOUT US

Pinnacle Industries (India) is a partnership company serving in casting & machining industry as one-stop solution for all types of engineering component needs of its clients since 2010. We are based in the Rajkot city of Gujarat State in India. We are a bona fide 100% Export Oriented unit (EOU) from India with more than 12 years of experience in castings and machined components.



We offer services to our customers in design, engineering, material supply, casting, machining, finishing, heat treatment, assembly, inspection & testing, sheet metal processing and prototype manufacturing.

We provide Casting & development of Critical Precision Machined components services to several industries like Pumps, Valves, Automotive, Aerospace, Agriculture, Railway, Textile, Electrical, Marine, Energy, Mining, Oil-Gas, Medical, Defense, Fire-fighting, General Engineering and OEM productions. We are process driven and work closely with foundries for consistent quality.

## Our Vision

To Be A Global leader in Critical precision Machining & Casting Component industry through innovation, quality products & Mutually beneficial alliances.

## Our Mission

To support our customers by providing superior products and services of exceptional value which help them gain competitive advantage in their markets.

To sustain our vision by constantly seeking renewal via continual improvement in processes, and the application of new technologies and best business practices.

To provide a pleasant, nurturing and growth oriented environment which encourages our employees to be highly productive and to grow personally and professionally.



# Certificate



## CERTIFICATE

Management system as per  
**ISO 9001 : 2015**

The Certification Body TÜV INDIA hereby confirms as a result of the audit, assessment and certification decision according to ISO/IEC 17021-1:2015, that the organization

**PINNACLE INDUSTRIES**  
Plot No. 5, Rameshwar Industrial Area,  
Real Way Bridge Street, Behind Parin Furniture,  
Gondal Road, Vavdi, Rajkot - 360 004,  
Gujarat,  
India



operates a management system in accordance with the requirements of ISO 9001:2015 and will be assessed for conformity within the 3 year term of validity of the certificate.

Scope -

**Manufacture and Supply of Ferrous And Non - Ferrous Metal Machined Components.**

Certificate Registration No. **IND 100 23394134**  
Audit Report No. **Q 12374/2023**

Valid from **22.06.2023**  
Valid until **21.06.2026**  
Initial certification **22.06.2023**

Certification Body  
at TÜV INDIA PVT. LTD.

Mumbai, **22.06.2023**

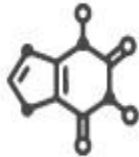
TUV India Pvt. Ltd., 801, Raheja Plaza – 1, L.B.S. Marg, Ghatkopar (W), Mumbai - 400 086, India [cert\\_helpdesk@tuvindia.co.in](mailto:cert_helpdesk@tuvindia.co.in)



# Services We Offer



ENGINEERING &  
DESIGN



MATERIAL



CASTING &  
FOUNDRY



CNC MACHINING



FINISHING



HEAT  
TREATMENTS



ASSEMBLY



INSPECTION &  
TESTING



CONTRACT  
MANUFACTURING



PROTOTYPE  
MANUFACTURING

# Industries We Serve

- Aerospace
- Agriculture
- Automotive
- Defence
- Fire Fighting
- General Engineering
- Hydraulic System
- Oil And Gas
- Marine
- Medical Equipment
- Pumps
- Railway
- Textile Machinery
- Valve
- Wind Energy
- OEMs

# Product Design & Development

Pinnacle Industries is one-stop solution in machining industry from concept and design development works to final delivery of goods to the clients worldwide.

In this phase, you will have opportunity to involve in development process in order to produce a prototype that meets your expectations in terms of reliability and quality.

- We have in house capabilities to design products & manufacturing process
- CAD & CAM tools are used for designing and machining
- Development of components as per customers sample, drawing & specifications
- In consultation with the customer, we can redesign the process to improve the quality of product at reasonable price



## We adopt following Casting, Machining & finishing processes

- ✓ Investment casting
- ✓ Sand casting
- ✓ Forging
- ✓ Shell moulding
- ✓ Gravity Die casting
- ✓ Pressure Die casting
- ✓ Metal injection moulding
- ✓ Powder metallurgy sintering
- ✓ Sheet metal bending
- ✓ Hobbing, Honing & Shaping
- ✓ Finished Machining & EDM Process
- ✓ As manufactured (Blasted)
- ✓ Semi finish
- ✓ Machined
- ✓ Sub assembly
- ✓ Coated
- ✓ Polished
- ✓ Painted



# Machining Facilities



Ace, Jobber  
XL, Machine Qty: 11



Ace, LT20  
Classic, Machine Qty:  
5



Ace, Supper Jobber  
500, Machine Qty: 5



Ace, VTL 30/700,  
Machine Qty: 2



Ace, J300-LM,  
Machine Qty: 3



Jyoti, DX200-5B,  
Machine Qty: 5

# Machining Facilities



Ace, VMC,1060V,  
Machine Qty: 2



Ace, VMC,850V,  
Machine Qty: 4



Ace, VMC,450 Pallet  
Changer, Machine Qty: 1



Jyoti, VMC,1260,  
Machine Qty: 1



Ace, VMC, MCV450,  
Machine Qty: 3



Ace, VMC MCV650,  
Machine Qty: 1

# Machining Facilities



BFW, VMC, BMV60,  
Machine Qty: 1



BFW, VMC, BMV50,  
Machine Qty: 2



BFW, VMC, Xtron,  
Machine Qty: 1



Cosmos, VMC, CVM800  
Machine Qty: 1



Jyoti, VMC 850,  
Machine Qty: 3



Cosmos, VMC, CVM1060  
Machine Qty: 3

# Conventional Machines



Lath Machine



Buffing Machine



Drill Machine



Milling Machine

# Machining Facilities



Cristal, Vertical  
Balancing Machine



Cristal, Horizontal  
Balancing Machine



Fero, Pressure Test



Wire cut Machine



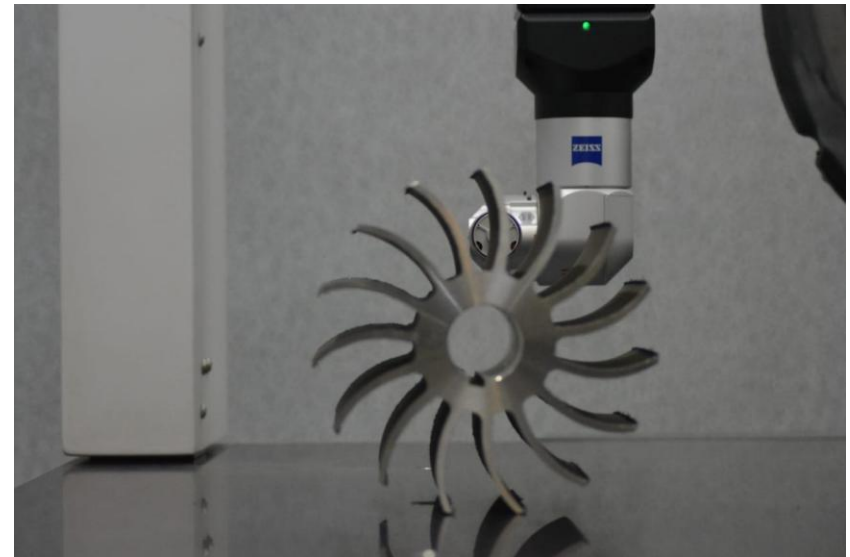
Starless, Laser Marking



Sparkonix, EDM

# Manufacturing & Quality control

- Strict production management & manufacturing up gradation.
- Our highly skilled personnel operates from a modern, well equipped machine shop with Carl Zeiss Make Spectrum II CMM Machine.
- Process control from design development to mass production.
- We continuously strive to improve the quality of product.
- Tracking, traceability & accountability.





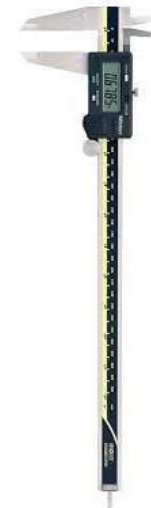
Zeiss, Spectrum II  
600 X 700 X1000



Mahr, PS10 Surface  
Roughness Tester



Mitutoyo, SJ210 Surface  
Roughness Tester



# Investment Casting Machined Parts

- **Capacity :** Weight from 50 Gram to 150 Kg
- **Products :** Valve Body, Balls, Lock plates, NRV, Discharge, Suctions, Stuffing box, Handles, Levers, Flanges, Casings, Impellers, Diffusers, Seals, Housings, Nuts etc..
- **Material :** CS840 Gr.3, All carbon steel grades, All stainless steel grades, All duplexsteel grades, all Copper & Copper alloy etc..





# Sand Casting Machined Parts

- **Capacity:** 1Kg to 1 Ton
- **Products:** Valve Body, Flanges, Casings, Bearings, Seal, Plates, Housings
- **Material :** All grades of ductile iron, All grades of cast iron, All grade of Carbon steel, All grade of Stainless steel, All grades of SG iron, Aluminum grades etc...



# Forging Machined Parts

- **Capacity :** 100 Grams to 10 Kg.
- **Products :** Bolts, Bars, Rings, Shanks, Hooks, Forged Rolls, Cranks etc...
- **Material :** All grades of Carbon Steel, Copper, Super Alloys And Special Alloys etc...



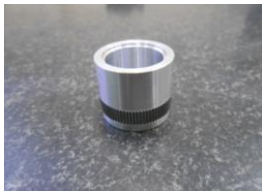
# Metal Injection Molding

- **Capacity :** 10 Grams to 250 Grams
- **Products :** Lid Covering, Gears etc...
- **Material :** FN 02, FN 0205, 4605, FN 08, 8620, 42CrMo4, 100Cr6, 1010, 8740, 316L, FeSi3, P.A.N.A. C.E.A, 17 4 Ph, 420 W, 310 N, M2, S7 etc...



# Machined Parts From Bar-Stock Material

- **Capacity :** Dia. 5mm to 500mm X 1000mm
- **Products :** Shafts , Nuts ,Flanges, Bearings, Pins, Keys etc...
- **Material :** Ferrous & Non Ferrous material as per ASTM,BS, DIN, JIS, SAE Standards.



# Sintering Process Material

- **Capacity :** 10 Gram to 1 kg
- **Products :** Gear, Bush etc...
- **Material :** Ferrous & non Ferrous material as per ASTM, BS, DIN, JIS, SAE Standards.



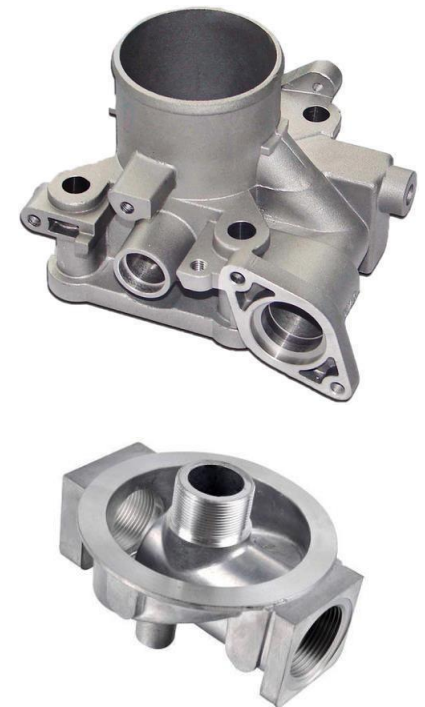
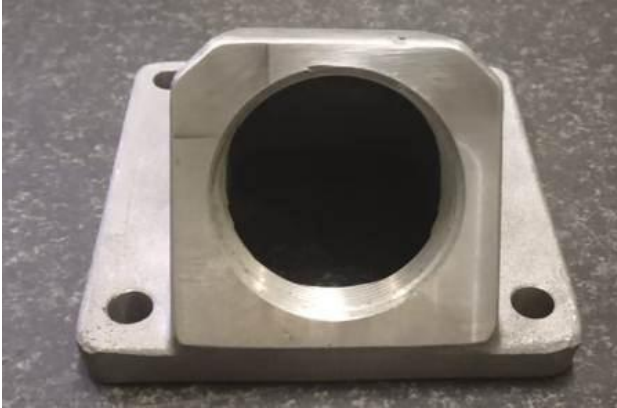
# Pressure Die Casting Machined Parts

- **Capacity :** 50 Gram to 5 kg
- **Products :** Supports, Box, Covers, Housing etc...
- **Material :** All aluminum grades



# Gravity Die Casting Machined Parts

- **Capacity:** 100 Gram to 50 kg
- **Products:** Valve body, Casing, Joints etc.
- **Material:** All Aluminum grades



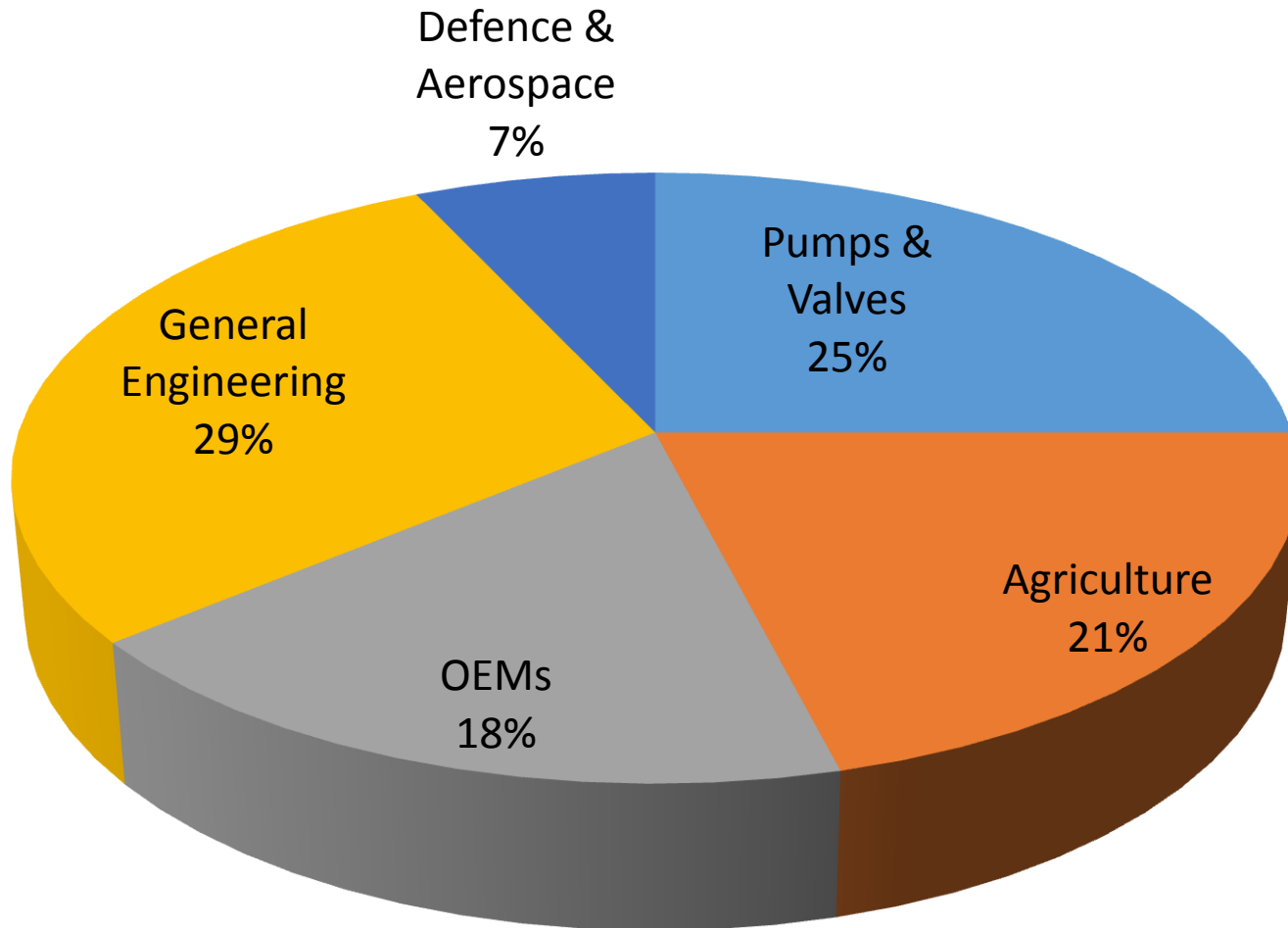
# Gear Box Parts made with Hobbing & Gear Shaping Machines

- **Capacity :** Dia.500mm, 700 mm Length
- **Products :** All type of gears, Racks & Pinions
- **Material :** Plain Carbon Steel, Alloy Steel, Stainless Steel, Aluminum Alloy, Brass, Bronze, Titanium Alloy etc....

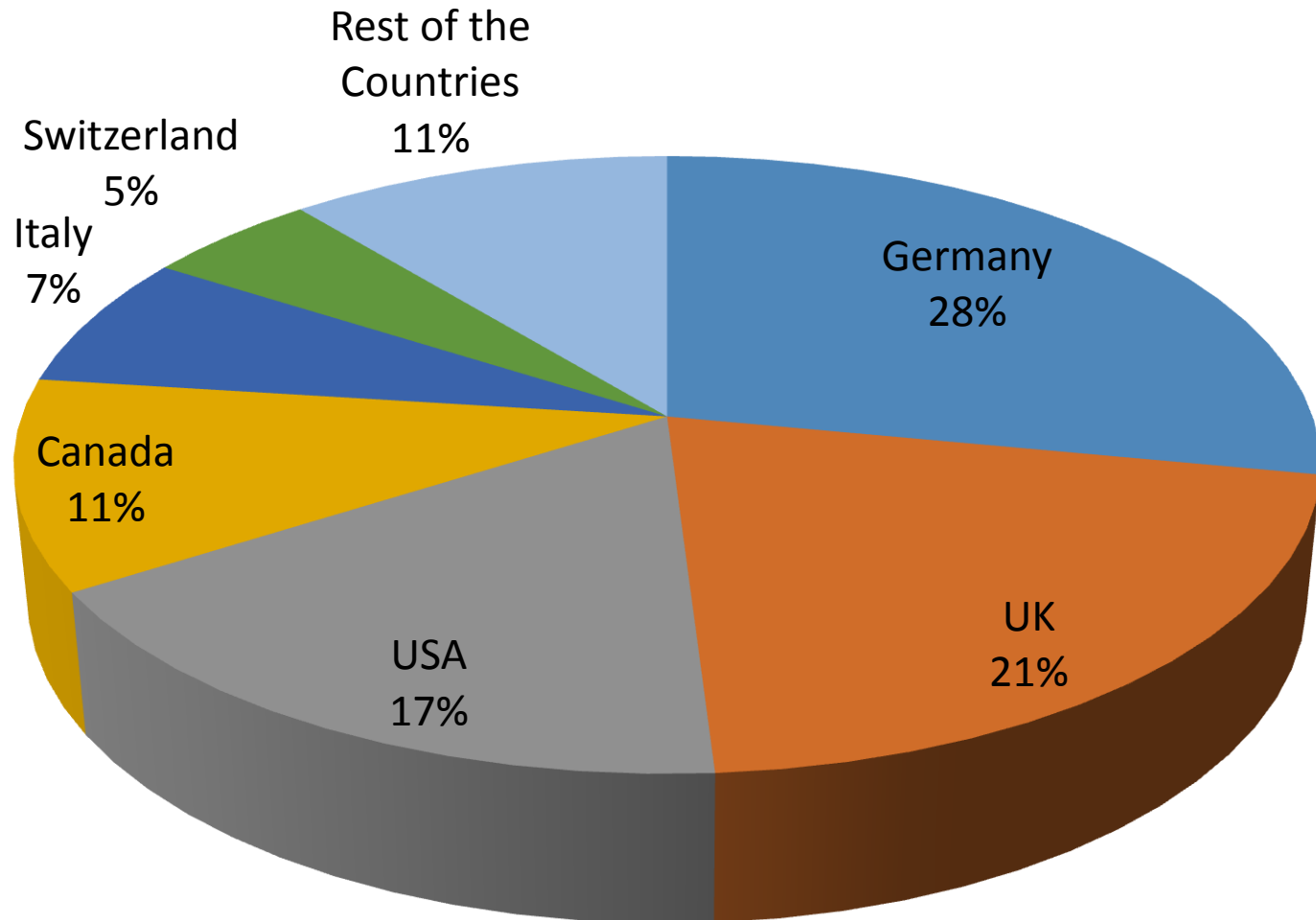




## Our segment wise production



# Our county wise precision component export



# Why

## “ PINNACLE ”

- ✓ Committed to on time delivery
- ✓ Quality to the highest level.
- ✓ Adhere to meet Customer Specific Requirements.
- ✓ Versatile product range
- ✓ Choice of processes considering cost component .
- ✓ Choice of material grade best suited to product application
- ✓ Ready to assembled products
- ✓ Single spot solution for all requirements of your production line.

Thank you!

# PINNACLE INDUSTRIES

Plot no 5, Rameshwar Industrial Area, Behind Parin Furniture,  
Real Weigh bridge Street, Gondal Road, Vavdi  
Rajkot – 360 002, Gujarat (India)  
Tel: +91 7600 260 290

 [www.pinnacleindustriesindia.com](http://www.pinnacleindustriesindia.com)

 [info@pinnacleindustriesindia.com](mailto:info@pinnacleindustriesindia.com)

## Team Pinnacle,

- “A customer is the most important visitor on our premises.
  - He is not dependent on us. We are dependent on him.
- He is not an interruption in our work. He is the purpose of it.
  - He is not an outsider in our business. He is part of it.
- We are not doing him a favor by serving him. He is doing us a favor by giving us an opportunity to do so.” - **Mahatma Gandhi**

